

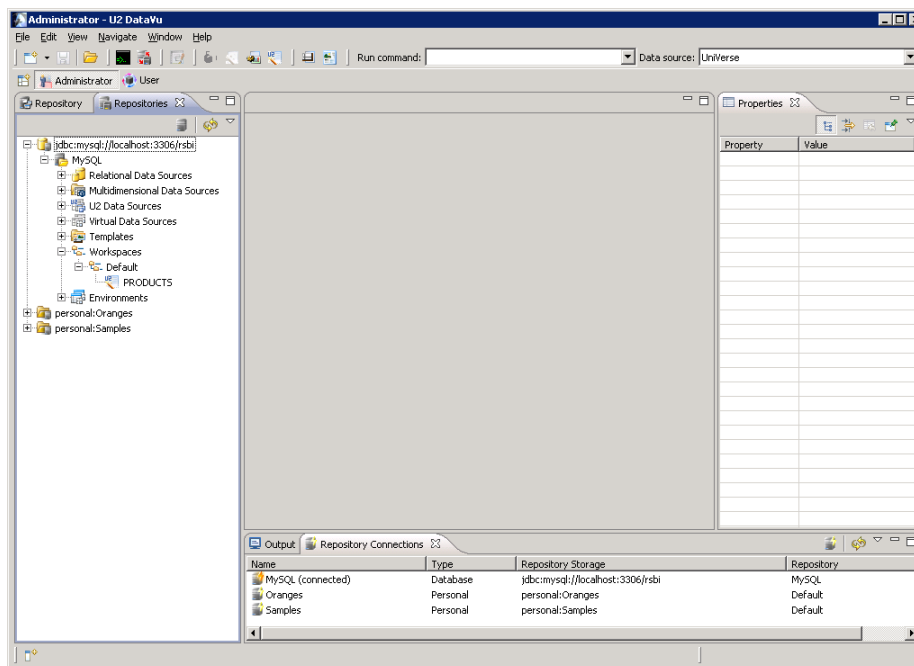
## Importing Repository Information into U2 DataVu Web

U2 DataVu Web connections to repositories can be configured manually (refer to the document, Configuring U2 DataVu Web) or you can import the configuration information from U2 DataVu. This document explains how to import the data from U2 DataVu.

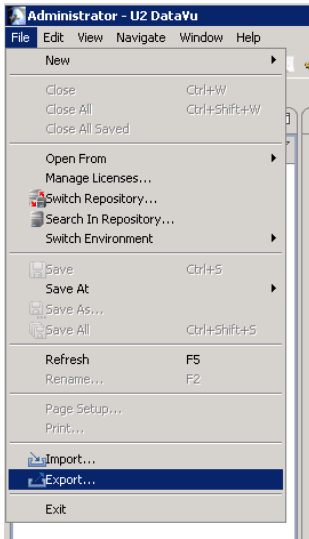
### Exporting Configuration Data from U2 DataVu

Initially, you created and connected to a Shared Repository Storage using U2 DataVu, created a shared repository, and then saved your queries and dashboards to that shared repository. In order to access those saved queries and dashboards you need to configure U2 DataVu Web to connect to the shared repository.

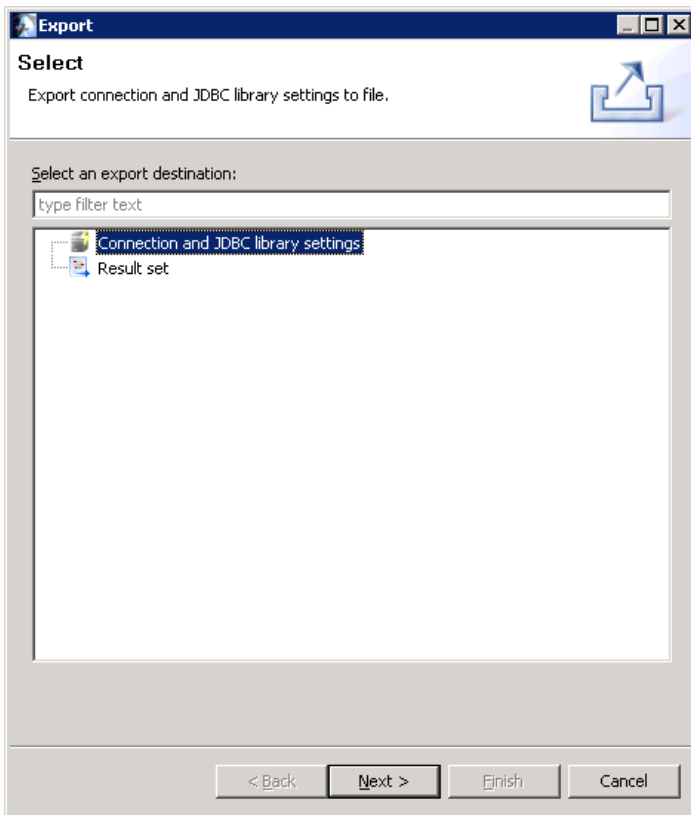
1. In the U2 DataVu Administrator perspective you can see all of your repositories.



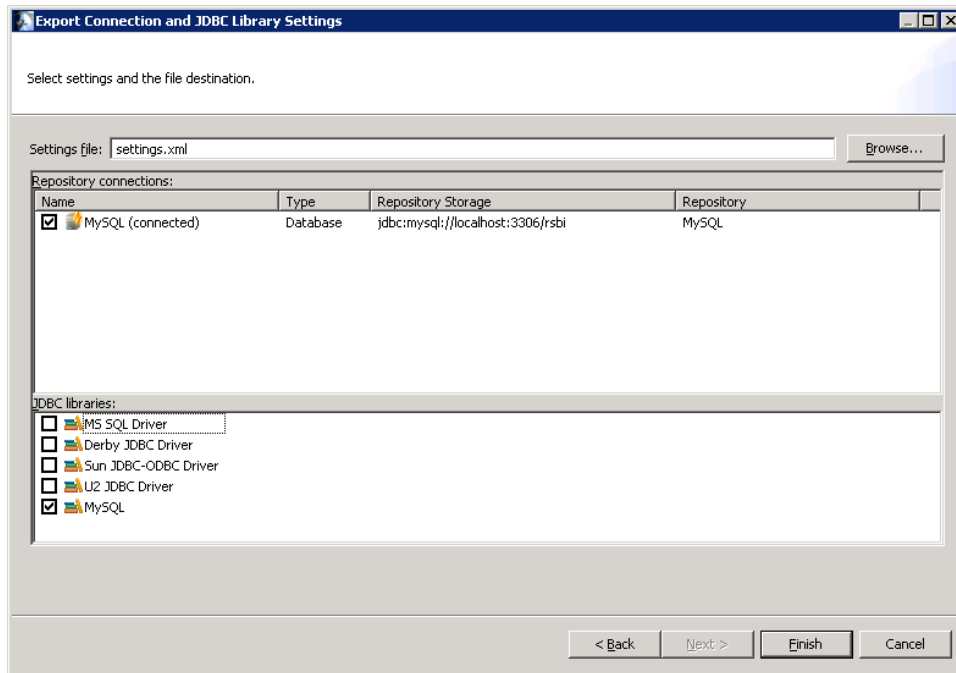
2. Click **File > Export**.



3. Double-click **Connection and JDBC library settings**.



4. Select checkboxes for the MySQL Repository connection and MySQL JDBC libraries and then click **Finish**.

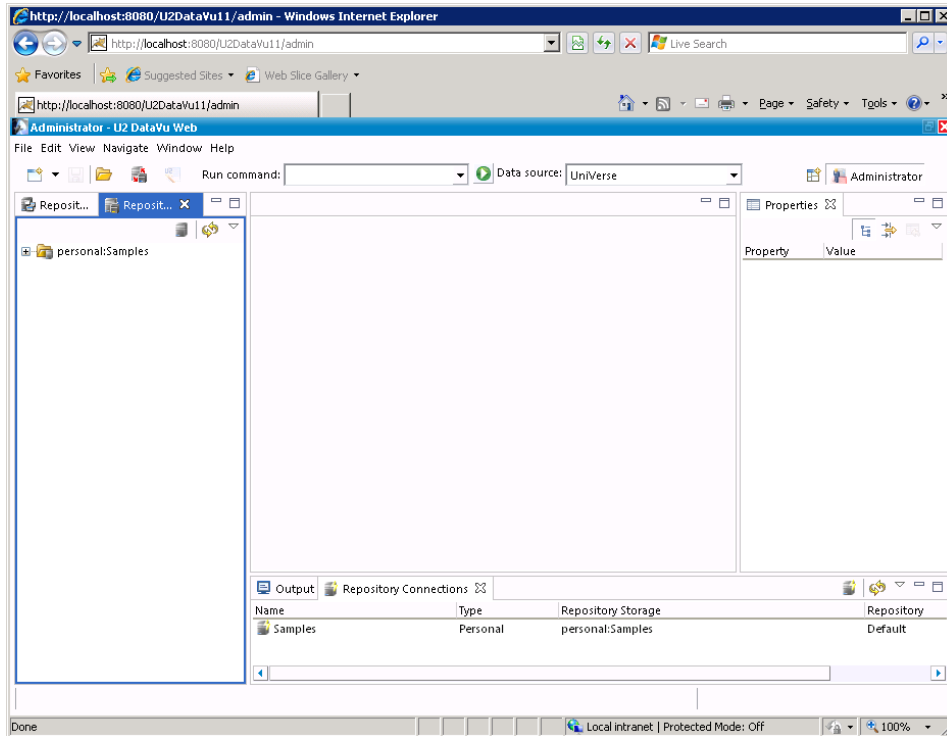


The connection and JDBC library information is exported to \Program Files\Rocket Software\U2 DataVu\U2 DataVu Workstation\settings.xml.

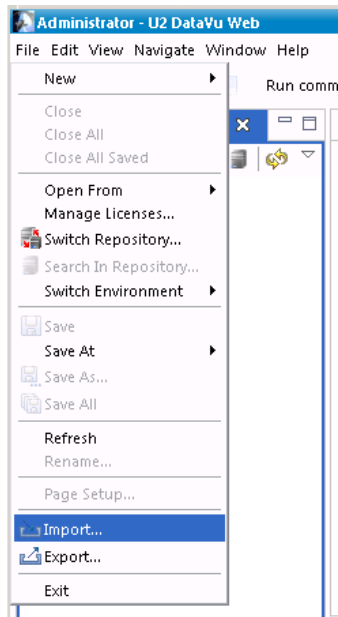
### Importing Configuration Data into U2 DataVu Web

After exporting the repository connection and JDBC library information from U2 DataVu, it can be imported into U2 DataVu Web.

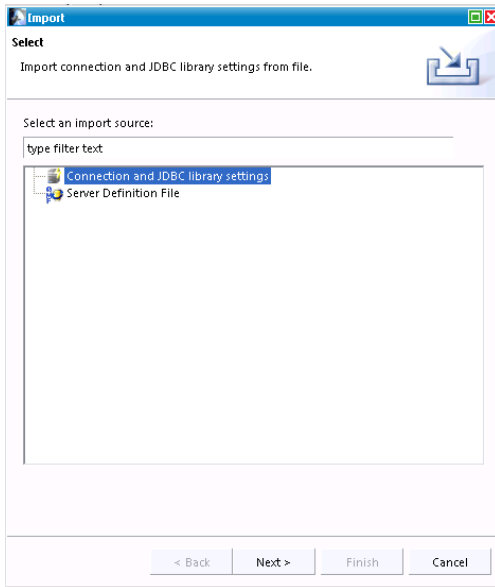
1. When you first start the U2 DataVu Web admin perspective there are no repositories or repository connections.



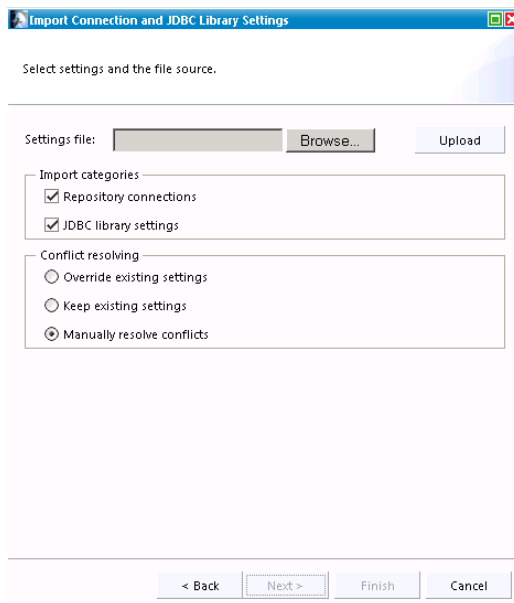
2. Click **File > Import**.

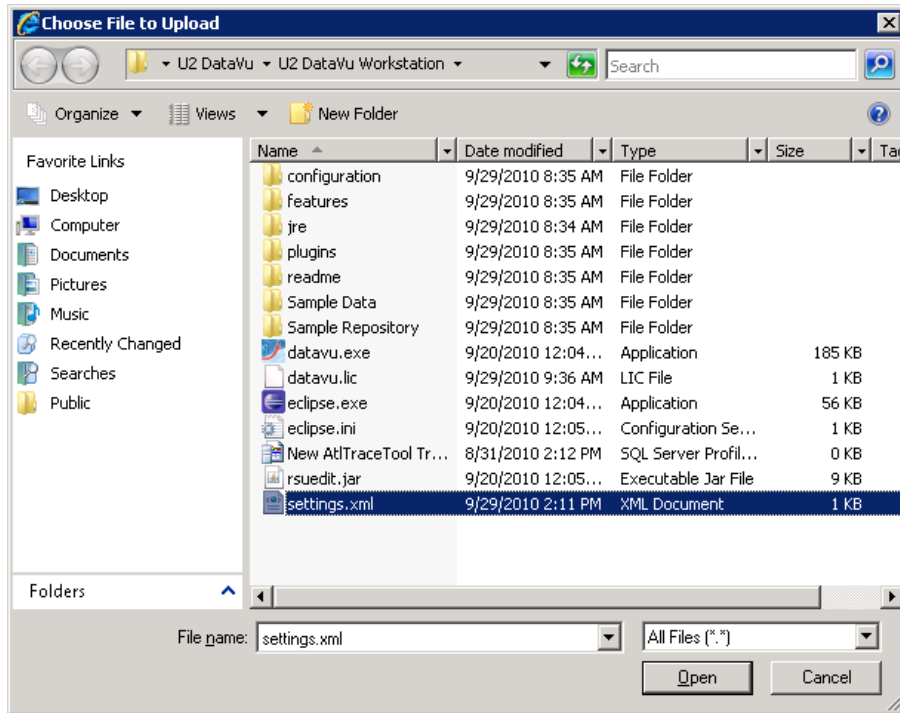


3. Double-click on **Connection and JDBC library settings**.

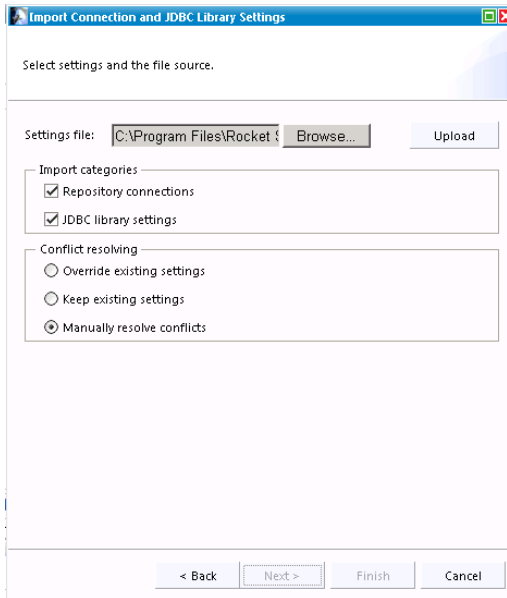


4. Click on the Browse button to locate \Program Files\Rocket Software\ U2 DataVu\U2 DataVu Workstation\settings.xml.

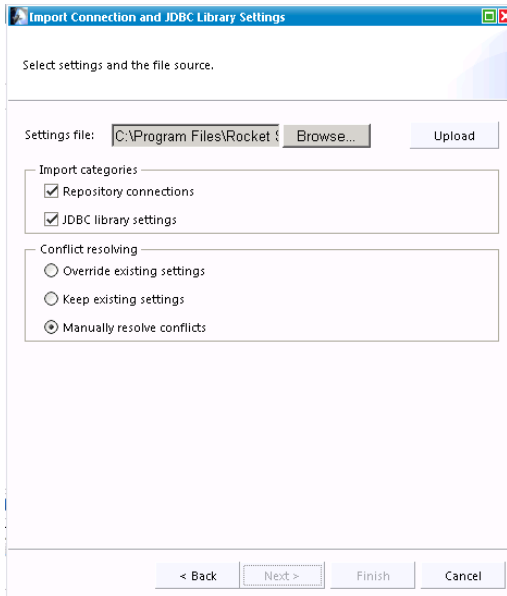




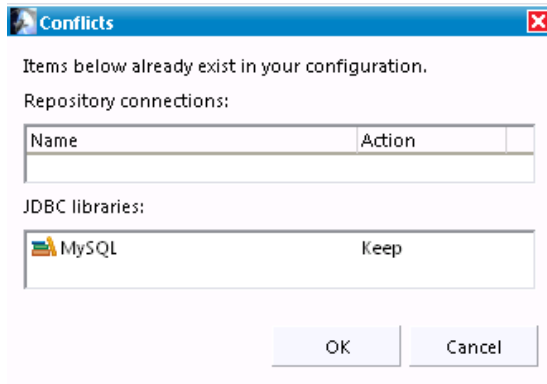
5. Click the **Upload** button.



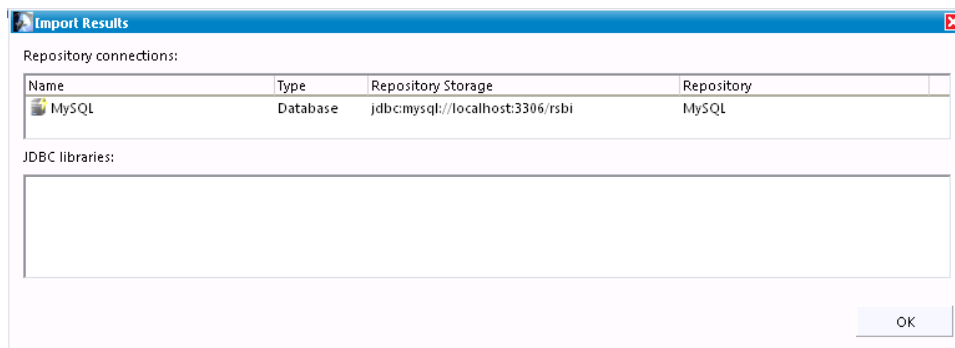
6. If you have never imported any connections, select **Override existing settings**. If you have imported before, as in this example, select **Manually resolve settings**.



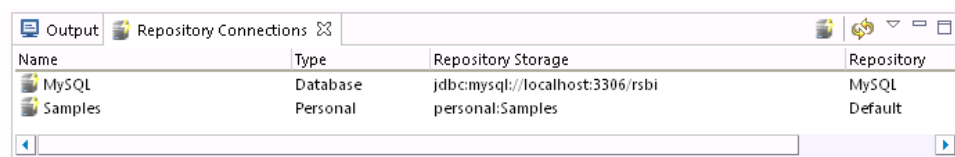
- If you selected **Manually resolve conflicts** the Conflicts dialog is displayed showing the existing connections and JDBC libraries. In this example, we do have the MySQL SQL JDBC libraries installed but we'll click **OK** to override them.



- The Import results dialog is displayed indicating what's has been imported. In this example, the MySQL shared repository connection was imported. Click **OK**.



- The imported connections are now shown on the Repository Connections tab.

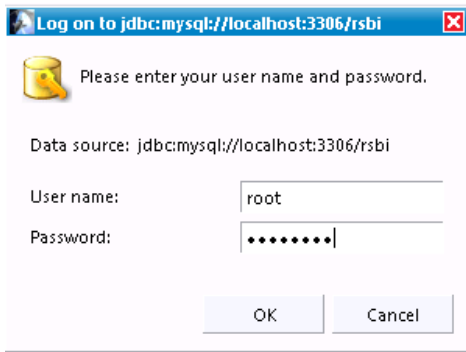


## Connecting to the repository

After importing connections and JDBC libraries you can connect to the repository.



1. Right-click on the connection Name (MySQL), then **Connect**. Log in to MySQL.



2. The repositories will be displayed in the Repositories tab. This may take a few seconds to display. In this example, we have expanded the repository to show the data source (UniVerse) and a saved query in the Workspaces folder (PRODUCTS).

